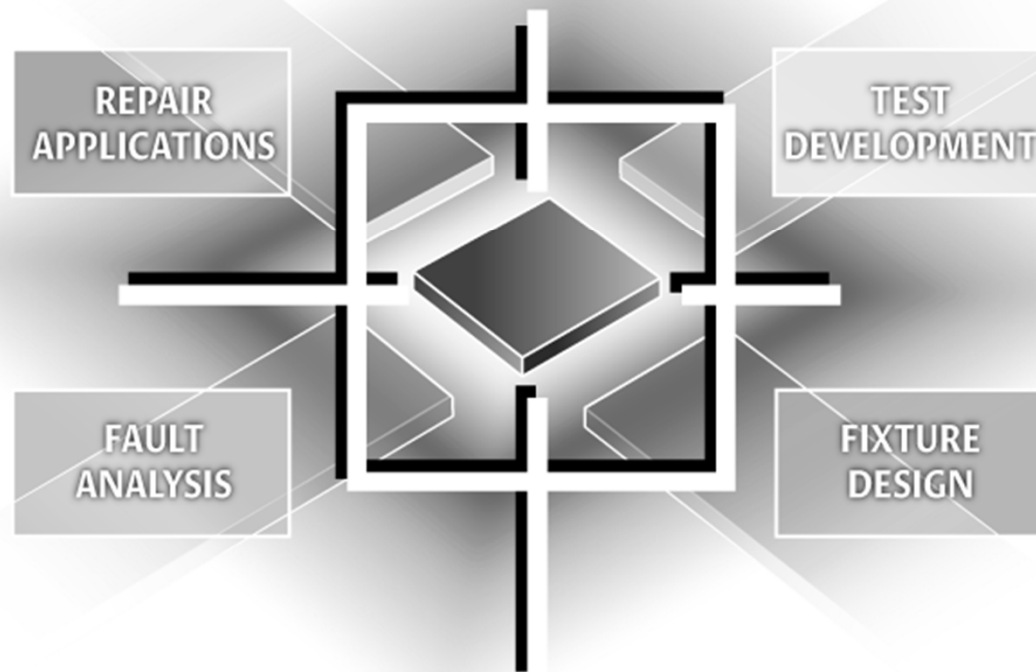


TestSight[®]



© 2017 DeMille Research Inc. All rights reserved.

TestSight Tactix®

- Overview
 - Predictive test coverage analysis of the entire circuit board fault spectrum
 - Combine ICT, Functional, Boundary Scan, XRay, Optical, and Visual test and inspection methods
 - Determines the effectiveness and completeness of your overall test strategy prior to funding commitments

TestSight Tactix[®]

- Why Predictive Analysis?
 - Models the effectiveness of a test technology prior to development of the actual test
 - Reduces time and cost of overall test strategy
 - Employs advanced PCOA-SOQ-LP fault spectrum

TestSight Tactix®

- The PCOA-SOQ-LP Fault Spectrum
 - Part process faults
 - P (Present), C (Correct), O (Orientation), and A (Alignment)
 - Pin process faults
 - S (Shorts), O (Opens), and Q (Quality)
 - Part electrical faults
 - L (Live) and P (Performance)

TestSight Tactix®

- The Tactix Test Floor

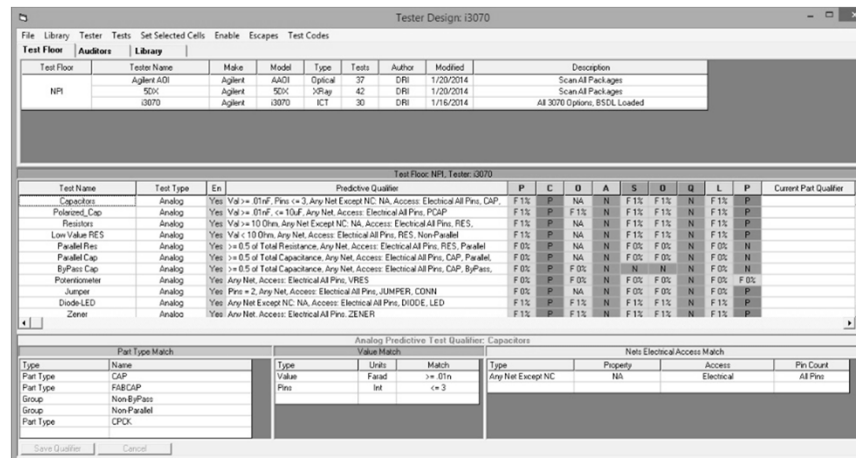
The screenshot shows the TestSight Tactix software interface. The title bar is 'Tactix'. The menu bar includes 'Analysis', 'DPMO-Sigma', 'PCOA-SOQ-LP', and 'Both'. The 'Test Floor' dropdown is set to 'NPI'. The 'List All Testers' dropdown is set to 'List All Testers'. The 'No Stress Test' dropdown is set to 'No Stress Test'. The main table has columns for Testers, Process, Electrical, All, and Total. The data is as follows:

Test Floor	Testers		Process				Electrical				All		Total				
	Tester	Test Plan	P-C-D-A	NT	S-D-Q	NT	Access	Side	L-P	NT	Total	NT	->DPMO	Esc	DPMO->	Sigma	Yield
0	Untested												144757	0	144757	2.6	85.52%
NPI	Agilent A01	Predictive	74%	0	53%	0	Probes	Any	0%	63	50%	0	144757	489	74360	3	92.56%
	5DX	Predictive	47%	0	100%	0	Probes	Any	0%	63	85%	0	74360	3276	12109	3.8	98.79%
	i3070	Predictive	29%	36	59%	144	Probes	Any	29%	41	53%	36	12109	7	8111	4	99.19%
	Combined		82%	0	100%	0			29%	41	91%	0	144757	328	8111	4	99.19%

- Choose any combination of testers
- Shows combined results of all tests

TestSight Tactix®

- The Tester Library



- Uses an open, flexible rules-based model for fault analysis
- Includes a library of predefined Tester Models

DeMille Research Inc.

25422 Trabuco Road, No. 105-247
Lake Forest, California 92630-2797

Phone: +1.949.462.9345

Fax: +1.949.462.9346

Email: salesinfo@testssight.com